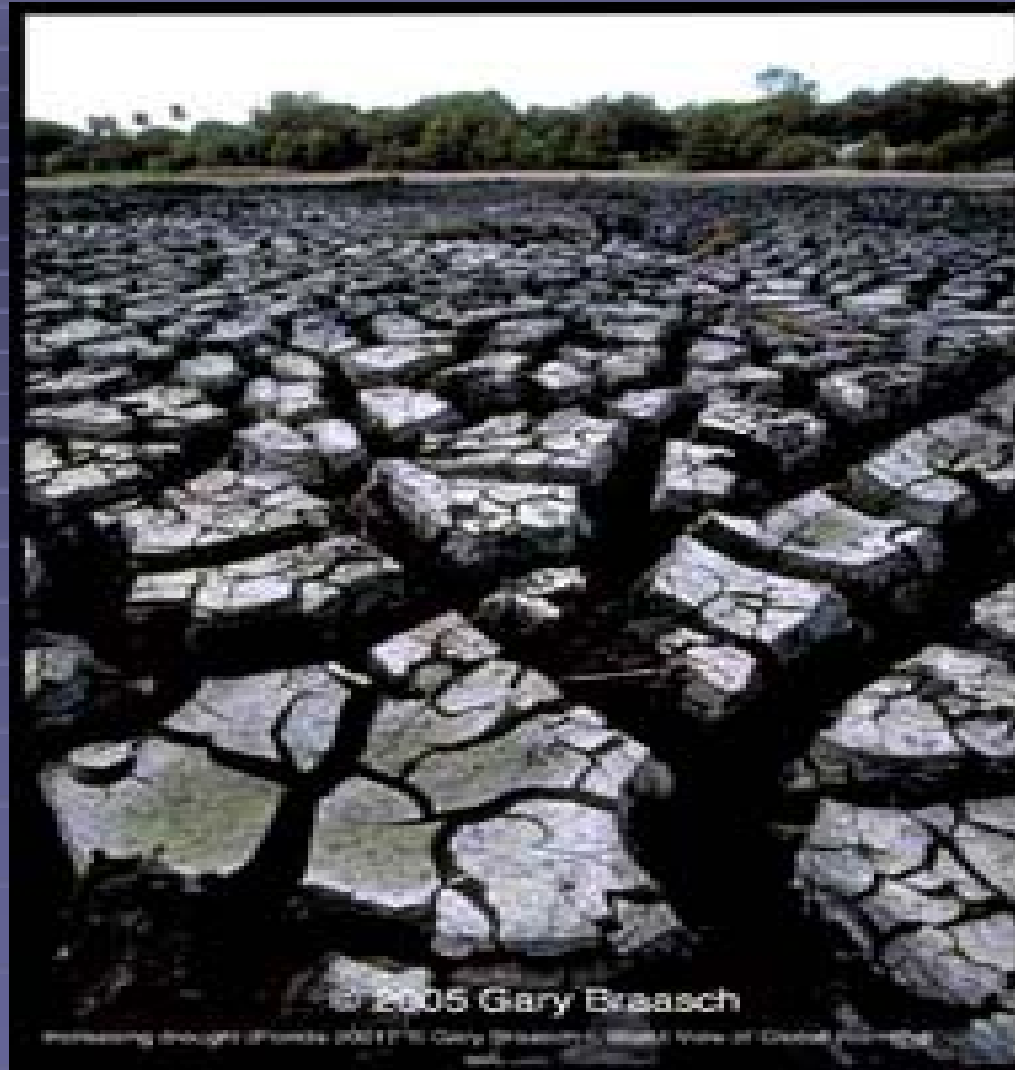


CLIMATE CHANGE & SWANA

Laurie Batchelder
Adams

April 14, 2008

2008 Canadian Waste
Resource Symposium





1999



2004

© GARY BRASCH

Just the Facts, Ma'am

	20th Century	21st Century	Notes
Warming Trend	1.44 degrees F	2-12 degrees F	11 of last 12 years = warmest in modern history
Sea Levels	4-8 inches	19-37 inches	23 feet if entire Greenland ice sheet melts
CO₂ Levels	< 1% last 10,000 yrs	33% since Industrial Revolution	650,000 yrs ago - last time atmospheric CO ₂ at today's levels

Global Warming

- Solid waste industry generates <4% of total Canadian greenhouse gas emissions
- Solid waste ops can reduce GHG emissions
 - Recycling – reduces need for virgin materials
 - Recycling & composting - carbon sequestration
 - LFGTE & WTE - electricity to replaces fossil fuels

SWANA's Role

- Recently Added Services & Programs
 - Joined Chicago Climate Exchange to offset all conferences
 - Four E-sessions in January 2008
 - Partnered with Clinton Climate Initiative
 - Continued national advocacy
- Soon-to-be-Released Products
 - Member web portal / info clearinghouse
 - Theme for overall WASTECON 2008 (Tampa)



The Energy, Climate and Solid Waste Connection

- ***Carbon Footprint Calculator***



You & SWANA?

- Become an ACTIVE member
- Join a Technical Division
- Become a training instructor
- Join SWANA's Applied Research Foundation (your business or government)



Expect - Question – Participate

Laurie Batchelder Adams
LBA Associates & SWANA
[*lbaassoc@qwest.net*](mailto:lbaassoc@qwest.net)

